

From: Grand Isle Consolidated Water <gicwd1@gmail.com>
Sent: Monday, March 5, 2018 9:56 AM
To: Levy, Zeno
Subject: GICWD updated SPP
Attachments: source protection plan 2018 2.docx

I called Rodney Pingree this morning to ask who we should send the updated Source Protection Plan which is due next month. He referred me to you. I have attached the updated plan for your approval. Please let me know if we missed anything or if there are corrections to be made. Once we receive your approval we will send the Landowner letters and provide the Town with the updated plan.

Warren Steadman

Source Protection Plan Update
Grand Isle Consolidated Water District
Grand Isle, VT
WSID 20614

Prepared by
Simon Operation Service
With help from
Grand Isle Consolidated Water District

April 2018

1.0 Introduction

This Source Protection Plan (SPP) update has been prepared for the Grand Isle Consolidated Water District (GICWD), WSID #20614, in accordance with the Vermont Water Supply Rule (WSR) Chapter 21. SOS has prepared this update with assistance from the GICWD.

The purpose of this plan is to protect the quality of the water that supplies the GICWD by identifying actual or potential sources of contamination within the recharge area to the system's intake and to produce a risk management plan to address those threats. This SPP also contains a Contingency Plan that should be followed in the event of an emergency involving the water supply. *When feasible, the 2018 updates are presented in italics.*

Water System Description

Two intakes in Lake Champlain supply the GICWD, as well as the Department of Fish and Wildlife fish hatchery. These intakes were installed in 1991 by the fish hatchery. Intake A is located 3400' from shore at a depth of 180'. Intake B is approximately 1200' offshore in approximately 20' of water. Raw water is obtained from both intakes throughout the year. The fish hatchery often uses a mixture of water to attain proper temperature for fish production. The GICWD built separate pumping and treatment facilities when it was established in 1998. As a result, raw water for the GICWD is made up of both shallow and deep water. The capability is available to shut down one intake if the need arises.

The system *now contains 760 connections*. There is an average daily demand (ADD) of 160,000 GPD as verified through a meter located at the treatment facility. Treatment for raw water is attained through pressure filters. Finished water is chlorinated prior to distribution. Water is stored in one 133,000-gallon tank and one 300,000-gallon storage tank.

The GICWD has installed two Granulated Carbon filters which are now operating in addition to the original filters.

Source Protection Area Delineation

The Source Protection Area (SPA) for this system was delineated using the methodology put forth in the Water Supply Rule for surface water.

Surface water systems with a 3000-foot radius circle Source Protection Area shall re-delineate their Source Protection Area(s) in accordance with Appendix A of this Rule, except for surface water systems using Lake Champlain as a source.

Surface water systems using Lake Champlain as a source shall re-delineate their Source Protection Areas in accordance with Appendix A of this Rule or in accordance with the US EPA approved Assessment Protocol for Great Lakes Sources, dated August 8, 1999. The public water system shall choose which method to use.

The intake location for the Grand Isle Consolidated Water System is located in Lake Champlain. GICWD, in collaboration with the Water Supply Division, applied the US EPA approved Assessment Protocol for Great Lakes to delineate their Source Protection Area. The GICWD did not identify large fluctuations in raw water quality, eliminating the need for an EPA designated Area of Concern. Instead, a Regional Investigation Area, consisting of a small drainage area surrounding the intake, has been delineated. This delineation is not part of the Source Protection Area, and will not be subject to the Water Supply Rule regarding Source Protection Areas. A map showing the relationship between the Critical Assessment Zone (EPA Great Lakes Protocol) and the Regional Investigation Area is included in the appendix.

2.0 Potential Sources of Contamination

For the purpose of this investigation, only potential sources of contamination (PSOC) within the Critical Assessment Zone (CAZ) were considered and individually identified. The CAZ will be referred to as the Source Protection Area (SPA) for ease and consistency from here on out. Single-family residences dominate the area in the SPA, however some commercial properties exist. PSOCs within the SPA were identified through a GIS survey of the area and a site visit. *For this 2018 update, a site reconnaissance survey was conducted in March 2018 by Mr. Warren Steadman and Joseph Danis, GICWD WSO.* Vermont environmental databases of USTs, hazardous waste sites, spills, hazardous waste generators and landfills were reviewed. All PSOCs have been evaluated and given a risk rating based on the nature of the contamination, proximity to the intake, etc. The PSOCs are summarized in a table below.

2.1 PSOC Inventory

PSOC #1- Lake Champlain Ferry Dock and Boat Traffic

The Lake Champlain Transit Company operates the Lake Champlain Ferry between Grand Isle, Vermont and Cumberland Head, New York. This ferry operates 24-hours a day, 365-days a year. The ferry frequently transports people, passenger and commercial vehicles. There is always the possibility that a major accident may occur while docking or traveling. A tanker truck supplies the ferry's fuel; therefore no fuel is stored at the ferry dock. However, fuel trucks are transported aboard and a large amount of fuel oil is contained within the ferry. There have been a number of reported spills occurring at or near the ferry launch. *There have not been any reported spills near the Ferry Dock since the last SPP update in 2015.. A list of spills reported for Grand Isle available from the State of Vermont DEC data base, is included in the Attachment.*

Boat traffic on Lake Champlain is also of a concern, especially during summer months when traffic is at its height. Boats, as with automobiles, require a number of petroleum products to operate. If an accident was to occur and a release of fuel and/or motor oil occurred the quality of drinking water may be jeopardized. In addition, many watercrafts have onboard septic holding tanks. If these contents were released near the intake, it could negatively impact the water supply.

According to Mr. Russell Fox, of the Lake Champlain Transit Company, in the summer of 2011 major improvements were made to the Grand Isle Ferry Landing area. This includes construction of a new retaining wall, a redesigned dock, and expansion and repaving of the approach lanes, parking areas, and commuter parking lots. A new storm water collection and treatment system was also constructed. The storm water treatment facility is located just south of the approach lanes, adjacent to the lake in a covered, well-vented building. The treatment includes "calming chambers" where much of the turbidity settles out and a baffle system which helps prevent floatable material, such as oil from being discharged into the lake. The storm water also flows through a sand filter as the final treatment.

One of the ticket collection buildings contains two public bathrooms as well as hand washing sinks. Waste from this facility flows to an on-site mound system. A second mound system was closed and removed after four employee trailers, as well as kitchen facilities were removed from the property.

Given the distance to the closest intake and the nature of contamination, the risk to the source is moderate to high.

PSOC #2- Residential Land Uses

Many residential properties exist within the SPA. These residences were at one time used only seasonally. However, in recent years, these homes have become occupied year round. Many of these homes have newly (within 10-15 years) engineered septic systems. The West Side Village Apartments are located on lot 80143.3. According to Mr. Warren Steadman, the septic system for this development was designed by Green Mountain Engineering, and is located to the east of the development, outside the Source Protection Area.

Several types of potential sources of contamination may exist on these residential properties. For the purposes of this plan, it is assumed that all of these residences use onsite septic systems and have heating oil storage. Fertilizers and pesticides may be applied to lawns and gardens, potentially reaching the lake. In addition, petroleum and fluid spills are possible from vehicle parking and lawn care machine maintenance. Local landowners have identified land-clearing activities that destabilize soils and increase erosion. Run-off from these construction activities has locally impacted the area within the Source Protection Area.

These properties have been assigned a moderate risk rating based on proximity to the intake, probability of release and type of contamination.

PSOC #3- Roads

Roadways can be a source of contamination from accidental spills or leaks from automobiles, and sodium and chloride from road salting. Hazardous substances can run off roads, driveways and parking areas flowing into culverts potentially reaching the lake.

These sources have been assigned a low risk rating, except the area located at the ferry dock. That area is grouped with PSOC #1 and carries the same risk rating.

PSOC #4- State of Vermont Fish Hatchery

The Ed Weed Fish Culture Station (the Hatchery) is located across from the Grand Isle Ferry Dock and intake for the Grand Isle Consolidated water system. The Hatchery and GICWD share the intakes for their operations. The Hatchery has an outflow stream that flows directly into Lake Champlain. This outflow is a natural stream that discharges water used in hatchery operations. The water does not contain any hazardous substances, however it does contain phosphorus and nitrate levels above background, but within the levels allowed by their indirect discharge permit. A copy of their permit is located in the appendix. Effluent from the Hatchery does not contain any pathogens, as the fish raised there are cold water species.

PSOC #5- Transmission Line

Located within the SPA is a substation owned by Vermont Electric Power Company (VELCO). This substation connects with an underwater electricity transmission line that runs along the bottom of Lake Champlain. This transmission line was cooled in the past by oil. The heat exchangers are no longer operational, however the oil is still contained in the cable. Oil in the cable is typical transmission oil and not PCB-laden. A very conservative figure estimates the amount of oil in each line to be 180 gallons and there are six lines. This information was obtained by a conversation with Jeff Wright with VELCO on Monday, July 11, 2005. The volume estimate was taken from approximate dimensions given by Jeff during that conversation. Low oil alarms are located at the substations on both the Vermont and New York side of the lake and would take approximately ½ hour for a crew to initially respond to the alarm.

The likelihood of line failure is slim and the potential dilution factor is high, therefore this PSOC is given a low risk rating.

PSOC #	Activity	Contaminant- Source	Risk Rating
1	Lake Champlain Ferry Dock	VOCs- motor oil and fuel spills Pathogens- on-board septic release	Moderate to High
2	Residential Property Use	Pathogens- Septic VOCs- driveways, fuel oil storage SOCs- home fertilizers and pesticides	Moderate
3	Roads	VOCs- accidents Sodium, Chloride- road salt application Sediment- runoff	Low
4	State of Vermont Fish Hatchery	Phosphorus and Nitrogen- hatchery discharge	Low
5	Transmission Line	VOCs- transmission oil	Low

2.2 **Regional Investigation Area**

Grand Isle Consolidated Water District did not identify any periods of the year when major fluctuations in raw water quality occur. Therefore, an Area of Concern, as defined in the EPA Great Lakes Protocol and adopted by the State of VT, is unnecessary. However, a Regional Investigation Area (RIA) has been considered. This is a very small drainage area immediately surrounding the water supply intake. This area includes PSOCs that do not fall within the SPA but are suspected to impact the intake at some point throughout the year.

Grand Isle Consolidated has identified a number of activities that exist outside of the SPA but are of potential concern to the quality of water near the intake. In a meeting with representatives from the GICWD, the Little Ausable River in New York, slight seasonal runoff was identified as PSOCs. Unfortunately, not much can be done to mitigate contamination originating in New York except heighten awareness throughout the Lake Champlain region through basin-wide planning programs. The minimal seasonal fluctuation is also difficult to manage on the small scale and will require a larger scale spectrum of work. *A golf course mentioned in previous SPPs has been closed for two years and the property has been divided into salable lots.*

Due to comments by attendees at the public meeting held concerning the Source Protection Area, the Regional Investigation Area has been changed to include a relic orchard north of the intake. This area also includes a small stream that drains to Lake Champlain.

3.0 Management of Risk

The Grand Isle Consolidated water system will manage the potential risk to their water system in the following ways:

1. *A letter will be sent to the new owners of all properties within the SPA notifying them they are located within the designated SPA for the GICWD intake. There was one (1) new property owner identified as part of the 2018 update.*
2. *An updated landowner list is attached, along with the tax map. The 2005 SPP contains an example of the letter. In addition, outreach information may be included in the annual water bill. This material will focus on septic care and maintenance, 'green' solutions to common commercial cleaning and fertilizing products, and/or 'Think Oil & Water'.*
3. Grand Isle Consolidated will conduct semi-annual inspections of the SPA to identify potential land use changes or changes in the status of the PSOCs.
4. A copy of the SPA map may be provided to the local, regional and state officials listed below. These lists have been updated in 2015.
5. Many local regulations are in place to prevent future unwanted sources of contamination. Permitted uses are limited to activities that are a low risk to the quality of the source.
6. Household hazardous waste collection days are held. These are open to all residents of Grand Isle, and those living with the SPA are strongly encouraged to participate.
7. In 2005, VELCO was in the process of updating their emergency plans to include new information such as this drinking water intake. Contact information has been sent to VELCO in the event of an emergency. They have received the phone numbers of Grand Isle Consolidated Operators, Water Plant and Water Supply Division.
8. A publication concerning shoreline stabilization can be obtained free by contacting the Northwest Regional Planning Commission, 7 Lake St., Suite 201, St. Albans, VT 05478, nrpcvt@nrpcvt.com, 802-524-5958.
9. Management of land use activities within the Regional Investigation Area will be left up to the discretion of the operators of GICWD.

Health Officer	Town Clerk
Ronnie Bushway 174 East Shore S Grand Isle, VT 05458 802 372 4834	Melissa Boutin Town of Grand Isle Grand Isle, VT 05458
Town Planning Commission	Zoning Administrator
<i>Shawn Mercy</i> Town of Grand Isle Grand Isle, VT 05458	Linda Effel Town of Grand Isle Grand Isle, VT 05458
Act 250 District Environmental Commission	Regional Planning Commission
Act 250 District Office 111 West St. Essex Junction, VT 05452-4695	Northwest Regional Planning Commission 7 Lake St St. Albans, VT 05478

4.0 Contingency Plan

This contingency plan outlines the steps that may be taken by the Grand Isle Consolidated Water District in the event the water supply becomes contaminated or, for other reasons, interrupted.

4.1 Emergency Response

In the event of a spill or other contamination event within the vicinity of the intake, or if a regulated substance is detected above acceptable levels during a routine sampling event, the Grand Isle Consolidated water system will carry out the steps outlined in the Short Term Contingency plan below.

The GICWD has a more detailed Emergency Response Plan in use. This plan should be referred to in any emergency situation. The plan is located at the water treatment plant site. Personnel involved with emergency situations are listed below for quick and easy reference.

Water System Personnel	VT Water Supply Division
<p>Water System Operator: Simon Operation Services 143 South Main Street Waterbury, VT 05671 802 244-7420 Also: Warren Steadman (SOS) <i>Joseph Danis (SOS)</i></p> <p>Water System Responsible Person: <i>Michael Inners</i> PO Box 9 Grand Isle, VT 05458 802 372 4534</p>	<p>Vermont Drinking Water and Groundwater Protection Division One National Life Drive-Main 2 Montpelier, VT 05620 802 241 3400</p> <p>VT Waste Management Division Hazardous Materials Spill Hotline 1 800 641 5005</p>
Grand Isle Municipal Offices	Grand Isle Health Officer
<p>Town Clerk/Treasurer: Melissa Boutin Town of Grand Isle Grand Isle, VT 05458</p>	<p>Ronnie Bushway 174 East Shore S Grand Isle, VT 05458 802 372 4834</p>
Emergency Services	Service Personnel
<p>VT State Police: St. Albans, VT 802 372 4482</p> <p>Fire Department (Volunteer): Grand Isle Volunteer Fire Dept. 802 372 4322 or 911</p>	<p>Plumber: Carl Menard 802 899 2635 802 351 3903-pager</p> <p>Electrician: Duane Cormier 802 372 9514 802 351 9514-pager</p>

4.2 Short-term Contingency Options

In the event that the system's water supply and/or distribution system becomes contaminated and water is deemed unsuitable for drinking, or in the event of mechanical failures or power outages, the following short-term contingency options may be used, as appropriate:

- Request users to conserve available water to allow the maximum use of water contained in the storage tank, assuming the quality of that water has not been compromised. This will be accomplished through a door-to-door notification, radio, TV and/or paper.
- Water may be supplied by one of the other public community water systems in the area (Grand Isle #4, North Hero FD #1), provided the water issue is not on a lake-wide level.

- Provide drinking water through bottled water available from one of the following vendors:
 - Vermont Pure Springs, Inc. 1-800-848-4260
 - Culligan Premium Bottled Water 802-865-0000
 - Vermont Heritage Spring Water 800-698-4792

4.3 Long-term Contingency Options

If the water supply remains contaminated or repeatedly becomes contaminated, a long-term option may need to be discussed. The chances of a widespread long-term contaminant issue is very low, however options need to be discussed and considered. They include, but are not limited to:

- Installing appropriate treatment;
- Repair/replacement of select distribution system elements;
- Discuss drilling a well to provide more reliably clean water.

4.4 Water System Shut Down/Start Up Procedures

The system shut down/start up procedures are located in the appendix.

5.0 Future Plans

The GICWD will update this SPP every three years. A guideline for updating the SPP is included in the appendix. In addition, this plan will be used as a planning tool for the town of Grand Isle in their future development needs. There is also the goal that this plan, along with outreach material distributed throughout the SPA and usage area, will develop better environmental stewardship.

Attachments

GRAND ISLE CONSOLIDATED WATER DISTRICT

P.O. Box 9
Grand Isle, VT 05458

Phone 802-372-3865

Spring 2018

Dear Landowner,

The Grand Isle Consolidated Water District draws water from Lake Champlain, using the Fish Hatchery intakes. Working with the Vermont Department of Environmental Conservation's Drinking Water Division we have defined an area near the intakes which is called our Source Protection Area. Your property is within this Source Protection Area.

Lake Champlain is a consistent supplier of high quality drinking water for many people in Vermont and New York including our water district. However, it is vulnerable to contamination from a wide range of everyday activities. If Lake Champlain becomes contaminated, the cost of treating the source or to find an alternative source may be prohibitive.

As part of our efforts to protect our water supply we are asking those of you in our Source Protection Area to do your best to prevent any release of contaminants that might jeopardize our water supply. We would greatly appreciate it if you could be attentive to the following habits and practice them where applicable:

- # Pump out your septic tank every 2-3 years
- # Refrain from dumping any drain cleaners, paint products and thinners, lawn chemicals or other household hazardous wastes down the drain
- # Warn your fuel delivery person to be careful not to overfill your fuel tank
- # If you do your own car or lawnmower maintenance, try not to spill any waste oil or hydraulic fluids on the ground surface or pour them down any drains
- # Refrain from using pesticides on your lawns and gardens, and use fertilizer sparingly

If you inadvertently spill a chemical on your land, please let us know immediately. If a significant spill occurs, we may need to shut down our pumps so we do not draw the contamination toward or into our intake.

If you have questions or comments please contact us at 802-372-3865. Please don't hesitate to leave a message if we do not answer immediately. The messages are checked frequently. If you have an emergency follow the instructions on the phone message.

Thank you for your attention,
The GICWD Board of Directors

GRAND ISLE CONSOLIDATED WATER DISTRICT

P.O. Box 9
Grand Isle, VT 05458

Phone 802-372-3865

Dear Grand Isle Officials:

Grand Isle Consolidated Water District draws water from Lake Champlain using the Ed Weed Fish Hatchery intakes. Attached a copy of our Source Protection Plan which includes a map of the Source Protection Area (SPA) for our water system. The SPA defines the area surrounding the intakes on Lake Champlain that directly contributes to our drinking water. Therefore, activities which could release contaminants into the environment within this area could threaten our water supply.

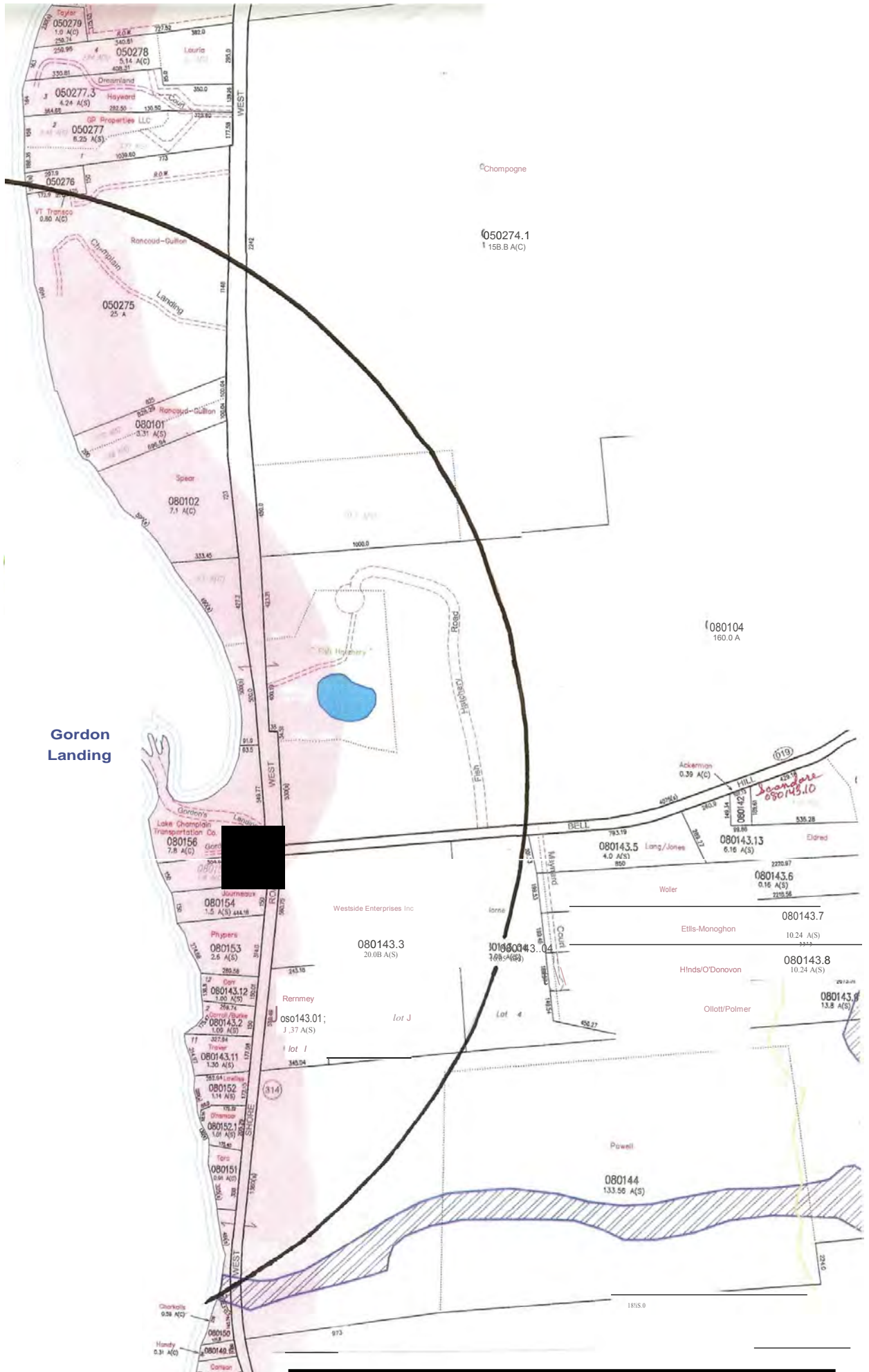
Since most of you are involved in making land use decisions at the local level, we thought it was very important that you receive a copy of our Source Protection Plan and SPA map. We are very concerned about protecting the quality of Lake Champlain since many people depend on this water for drinking and recreating. We are not only interested in protecting the source today, but for the future as well. If you become aware of any proposed land development within our SPA that could pose a risk to our drinking water, please let us know.

A copy of our Source Protection Plan (SPP) will also be kept on file at the Grand Isle Town Clerk's office for review at any time by town officials including the Selectboard, Planning Commission, Zoning Administrator and Health Officer.

Thank you for your attention to this matter. Please call us at 802 372 3865 if you have any questions or if we can be assistance.

Sincerely,

The Grand Isle Consolidated Water District
Board of Commissioners



Gordon Landing

N
CC
A
I
CC
C
C
J

Chompogne

050274.1
158.8 A(C)

080104
160.0 A



Westside Enterprises Inc

080143.3
20.0B A(S)

080143.04
1.6B A(S)

080143.01; lot J

lot I

lot 4

See parcel 080143.10

080143.5
4.0 A(S)

080143.13
6.16 A(S)

080143.6
0.16 A(S)

080143.7
10.24 A(S)

080143.8
10.24 A(S)

080143.9
13.8 A(S)

080144
133.50 A(S)

080150
0.58 A(C)

080148
0.31 A(C)

080149
0.31 A(C)

080151
0.58 A(C)

080152.1
1.01 A(S)

080152.2
1.01 A(S)

080152.3
1.01 A(S)

080152.4
1.01 A(S)

080152.5
1.01 A(S)

080152.6
1.01 A(S)

080152.7
1.01 A(S)

080152.8
1.01 A(S)

080152.9
1.01 A(S)

080153
2.6 A(S)

080154
1.5 A(S)

080156
7.8 A(S)

080157
1.0 A(S)

080158
1.0 A(S)

080159
1.0 A(S)

080160
1.0 A(S)

080161
1.0 A(S)

080162
1.0 A(S)

080163
1.0 A(S)

080164
1.0 A(S)

080165
1.0 A(S)

080166
1.0 A(S)

080167
1.0 A(S)

080168
1.0 A(S)

080169
1.0 A(S)

080170
1.0 A(S)

080171
1.0 A(S)

080172
1.0 A(S)

080173
1.0 A(S)

080174
1.0 A(S)

080175
1.0 A(S)

080176
1.0 A(S)

080177
1.0 A(S)

080178
1.0 A(S)

080179
1.0 A(S)

080180
1.0 A(S)

080181
1.0 A(S)

080182
1.0 A(S)

080183
1.0 A(S)

080184
1.0 A(S)

080185
1.0 A(S)

080186
1.0 A(S)

080187
1.0 A(S)

080188
1.0 A(S)

080189
1.0 A(S)

080190
1.0 A(S)

080191
1.0 A(S)

080192
1.0 A(S)

080193
1.0 A(S)

080194
1.0 A(S)

080195
1.0 A(S)

080196
1.0 A(S)

080197
1.0 A(S)

080198
1.0 A(S)

080199
1.0 A(S)

080200
1.0 A(S)

080201
1.0 A(S)

080202
1.0 A(S)

080203
1.0 A(S)

080204
1.0 A(S)

080205
1.0 A(S)

080206
1.0 A(S)

080207
1.0 A(S)

080208
1.0 A(S)

080209
1.0 A(S)

080210
1.0 A(S)

080211
1.0 A(S)

080212
1.0 A(S)

080213
1.0 A(S)

080214
1.0 A(S)

080215
1.0 A(S)

080216
1.0 A(S)

080217
1.0 A(S)

080218
1.0 A(S)

080219
1.0 A(S)

080220
1.0 A(S)

080221
1.0 A(S)

080222
1.0 A(S)

080223
1.0 A(S)

080224
1.0 A(S)

080225
1.0 A(S)

080226
1.0 A(S)

080227
1.0 A(S)

080228
1.0 A(S)

080229
1.0 A(S)

080230
1.0 A(S)

080231
1.0 A(S)

080232
1.0 A(S)

080233
1.0 A(S)

080234
1.0 A(S)

080235
1.0 A(S)

080236
1.0 A(S)

080237
1.0 A(S)

080238
1.0 A(S)

080239
1.0 A(S)

080240
1.0 A(S)

080241
1.0 A(S)

080242
1.0 A(S)

080243
1.0 A(S)

080244
1.0 A(S)

080245
1.0 A(S)

080246
1.0 A(S)

080247
1.0 A(S)

080248
1.0 A(S)

080249
1.0 A(S)

080250
1.0 A(S)

080251
1.0 A(S)

080252
1.0 A(S)

080253
1.0 A(S)

080254
1.0 A(S)

080255
1.0 A(S)

080256
1.0 A(S)

080257
1.0 A(S)

080258
1.0 A(S)

080259
1.0 A(S)

080260
1.0 A(S)

080261
1.0 A(S)

080262
1.0 A(S)

080263
1.0 A(S)

080264
1.0 A(S)

080265
1.0 A(S)

080266
1.0 A(S)

080267
1.0 A(S)

080268
1.0 A(S)

080269
1.0 A(S)

080270
1.0 A(S)

080271
1.0 A(S)

080272
1.0 A(S)

080273
1.0 A(S)

080274
1.0 A(S)

080275
1.0 A(S)

080276
1.0 A(S)

080277
1.0 A(S)

080278
1.0 A(S)

080279
1.0 A(S)

080280
1.0 A(S)

080281
1.0 A(S)

080282
1.0 A(S)

080283
1.0 A(S)

080284
1.0 A(S)

080285
1.0 A(S)

080286
1.0 A(S)

080287
1.0 A(S)

080288
1.0 A(S)

080289
1.0 A(S)

080290
1.0 A(S)

080291
1.0 A(S)

080292
1.0 A(S)

080293
1.0 A(S)

080294
1.0 A(S)

080295
1.0 A(S)

080296
1.0 A(S)

080297
1.0 A(S)

080298
1.0 A(S)

080299
1.0 A(S)

080300
1.0 A(S)

080301
1.0 A(S)

080302
1.0 A(S)

080303
1.0 A(S)

080304
1.0 A(S)

080305
1.0 A(S)

080306
1.0 A(S)

080307
1.0 A(S)

080308
1.0 A(S)

080309
1.0 A(S)

080310
1.0 A(S)

080311
1.0 A(S)

080312
1.0 A(S)

080313
1.0 A(S)

080314
1.0 A(S)

080315
1.0 A(S)

080316
1.0 A(S)

080317
1.0 A(S)

080318
1.0 A(S)

080319
1.0 A(S)

080320
1.0 A(S)

080321
1.0 A(S)

080322
1.0 A(S)

080323
1.0 A(S)

080324
1.0 A(S)

080325
1.0 A(S)

080326
1.0 A(S)

080327
1.0 A(S)

080328
1.0 A(S)

080329
1.0 A(S)

080330
1.0 A(S)

080331
1.0 A(S)

080332
1.0 A(S)

080333
1.0 A(S)

080334
1.0 A(S)

080335
1.0 A(S)

GICWD WSID 20614

Property Tax Map Showing Source Protection Area

Approx. Scale: 1" = 625'

//

Chart

HGI-mgton

Grand Isle Consolidated
Water
District
SPP
Update
2015
Land
Owner
List

Parcel #	Name	Location	City, State, Zip	Mailing Address (If different)
080154.00	Cecilia Journeaux	39 West Shore Rd	Grand Isle, VT 05458	429 Beaconsfield Blvd. Beacons Field, Canada, H0W4
050274.10	William & Joanne Champagne	64 West Shore Rd	Grand Isle, VT 05458	
080102.00	George Spear	67 West Shore Rd	Grand Isle, VT 05458	
080156.00	Lake Champlain Transportation Co	West Shore Road (Ferry Landing)	Grand Isle, VT 05458	1268 Gordon's Landing Burlington, VT 05401
080101.00	Rancoud-Guillon, JC & Emma	71 West Shore Rd	Grand Isle, VT 05458	
080144.00	David Powell	20 West Shore Rd	Grand Isle, VT 05458	
080143.30	West Side Enterprises, Inc.	10 West Side Village	Grand Isle, VT 05458	PO Box 162, Grand Isle, VT 05458
050275.00	Jean-Claude Rancoud-Guillon Rev. Trust	10 Champlain Landing 71 West Shore Road	Grand Isle, VT 05458	
080103.00	State of Vermont Buildings	61 West Shore Road	Grand Isle, VT 05458	
080153.00	Dean Phipers	37 West Shore Rd	Grand Isle, VT 05458	
080143.12	Allan Carr Rev. Trust Allan Carr, Trustee	35 West Shore Rd	Grand Isle, VT 05458	PO Box 173 Grand Isle, VT 05458
080143.20	Josephine Burke & Edward Carroll	33 West Shore Rd	Grand Isle, VT 05458	
080143.11	<i>Mitchell and Kristina Barchi</i>	31 West Shore Rd	Grand Isle, VT 05458	<i>4216 John Court, Flower Mound, TX 75</i>
080152.00	<i>Daniel & Susan Orr</i>	29 West Shore Rd	Grand Isle, VT 05458	
080143.01	Jesse & Jessica Rimmey	36 West Shore Rd	Grand Isle, VT 05458	
080151.00	Louis III & Marie Toro	27 West Shore Rd	Grand Isle, VT 05458	
080143.04	Mark & Gail Horn	9 Bell Hill Rd	Grand Isle, VT 05458	500 Route 2 South Hero, VT 05486
080143.50	Deborah Lang & Robert Jones	10 Maynard Court	Grand Isle, VT 05458	
080104.00	Ed Weed Fish Culture Center	14 Fish Hatchery Road	Grand Isle, VT 05458	
080152.10	Ann Dinsmoor Living Trust Karla Baehr Brooks Living Tr.	29 West Shore Road	Grand Isle, VT 05458	9 Shephen Place Newton, MA 02461
050276.00	Vermont Transco, LLC	4 Champlain Landing	Grand Isle, VT 05458	366 Pinnacle Ridge Road Rutland, VT 05701

N

o
t
e
:L
o
t8
0

1
5
5

i
s

n
o
w

p
a
r
t

o
f

l
o
t

8
0
1
5
6

L
o
t

5
0
2
7
4

i
s

n
o
w

p
a
r
t

o
f

5
0
2
7
4

S
p
i
l
l
s

R
e
p
o
r
t
e
d

i
n

G
r
a
n
d

l
s
l
e
,

V
e
r
m
o
n
t

S
o
r
t
e
d

b
y

D
a
t
e

Report #	Year	Facility Name	Address	Town	LEPC	Responsible Party
WMD102	2014	Lake Champlain by Grand Isle	Grand Isle	Grand Isle	13	
WMD209	2014	VELCO ROW	Structure # 278 - K-20 line	Grand Isle	13	Thomas Drilling & Blasting
WMD209	2013	Ferry Dock	Ferry Landing	Grand Isle	13	Lake Champlain Transportation
WMD498	2013	Siewwright Residence	19 Adams Landing Ext	Grand Isle	13	George Siewwright
WMD092	2012	Grand Isle Elementary	224 US Route 2	Grand Isle	13	Grand Isle Elementary
WMD284	2012	Residence	not reported	Grand Isle	13	Brian Ayers - one of hired help
WMD117	2011	A & B Beverage	193 US Rte 2	Grand Isle	13	Champlain Oil
WMD828	2011	Roadside	Donaldson Road	Grand Isle	13	unknown
WMD460	2011	surface waters	Coppers Point	Grand Isle	13	undetermined
WMD785	2011	VT Electric Coop Property	77 Allen Road	Grand Isle	13	VT Elec Coop
WMD128	2010	Shepard Residence	111 E Shore Rd, South	Grand Isle	13	Brian Shepard
WMD197	2008	Surpenant Residence	13 Landing Lane	Grand Isle	13	Island Excavating
WMD334	2007	A & B Beverage	Rte 2	Grand Isle	13	Casella
WMD301	2007	in front of A & B Beverage	193 Rte 2	Grand Isle	13	David Amseen
WMD032	2007	Lake Champlain	Hislop Landing Rd	Grand Isle	13	Michael Cameron
WMD365	2007	N/A	18 Robinson point rd	Grand Isle	13	Velco
WMD358	2007	roadside	U S Rte 2	Grand Isle	13	VELCO
WMD144	2007	Ron Prouty Residence	85 Rte 2	Grand Isle	13	Ron Prouty
WMD562	2006	Brad Keith Residence	278 Rt 2	Grand Isle	13	Rowley Fuels
WMD570	2006	Brad Keith Residence	278 Rt 2	Grand Isle	13	Rowley Fuels
WMD022	2006	intersection of Faywood and Rt 2	Rt 2	Grand Isle	13	Swift Transportation
WMD475	2006	N/A	77 U S Rt 2	Grand Isle	13	Rollie Palmer
WMD262	2006	William Haeger Residence	47 Moccasin Ave	Grand Isle	13	Haeger
WMD366	2004	Rosenburger Residence	139 E Shore North	Grand Isle	13	Franz Rosenburger
WMD133	2003	Todd Pratt Camp	62 US Route 2	Grand Isle	13	Todd Pratt
WMD244	2001	N/A	Grand Isle Ferry Dock	Grand Isle	13	Jon Hodgson
WMD114	2000	Henry Richardson Property		Grand Isle	13	Kamco Supply Corp
WMD007	2000	Rowley Fuels Bulk Tank	Rt 2.	Grand Isle	13	Mt Transit
WMD139	1999	N/A	Lake Champlain	Grand Isle	13	N/A
WMD044	1998	Citizens Utilities	S & N Hero,alburg,isle	Grand Isle	13	Citizens Utilities
WMD068	1998	Goodrich Residence	Rt 314	Grand Isle	13	N/A
WMD254	1998	Robertson Residence	292 East Shore Road N	Grand Isle	13	Al and Donna Robertson

S
o
u
r
c
e
:

V
T

D
E
C

S
p
i
l
l
s

D

a
t
a

B
a
s
e

S
p
i
l
l
s

R
e
p
o
r
t
e
d

i
n

G
r
a
n
d

I
s
l
e
,

V
e
r
m
o
n
t

S
o
r
t
e
d

b
y

D
a
t
e

WMD263	1997	Greenwood Residence		Grand Isle	13	Ellen And Dan Greenwood
WMD192	1996	McRay Bader Residence		Grand Isle	13	McRay Bader

WMD003	1996	N/A	Rt 2, Near Cobb Farm	Grand Isle	13	N/A
WMD193	1995	Lake Champlain Transit Authority	Ferry Rd, Ferry Dock	Grand Isle	13	Lake Champ Transit Authority
WMD137	1995	N/A	West Shore Rd	Grand Isle	13	Vantine Trucking
184	1993	N/A	Rt 2	Grand Isle	13	Serge Gendreau Transport Inc
247	1993	N/A	Burton Island State Park	Grand Isle	13	N/A
113	1993	Tudhope Marine	Rt 2	Grand Isle	13	R L Vallee
282	1990	Debuque Property	Ferry Rd	Grand Isle	13	Perley Debuque
84	1989	N/A	Ferry Dock	Grand Isle	13	B.I Patterson Fuel Co.
86	1983	N/A	On The Ferry	Grand Isle	13	White International Trucking
127	1983	N/A	West Shore Rd	Grand Isle	13	N/A
133	1983	N/A	Landfill	Grand Isle	13	N/A
154	1983	N/A	Gordons Landing	Grand Isle	13	Unk
140	1982	N/A	Private Residence	Grand Isle	13	N/A
43	1981	N/A	Grand Isle Ferry	Grand Isle	13	Lcta
80	1980	N/A	Ferry Landing	Grand Isle	13	N/A
150	1980	N/A	Ferry Landing	Grand Isle	13	Lake Champ. Trans. Authority

S
o
u
r
c
e
:

V
T

D
E
C

S
p
i
l
l
s

D
a
t
a

B
a
s
e