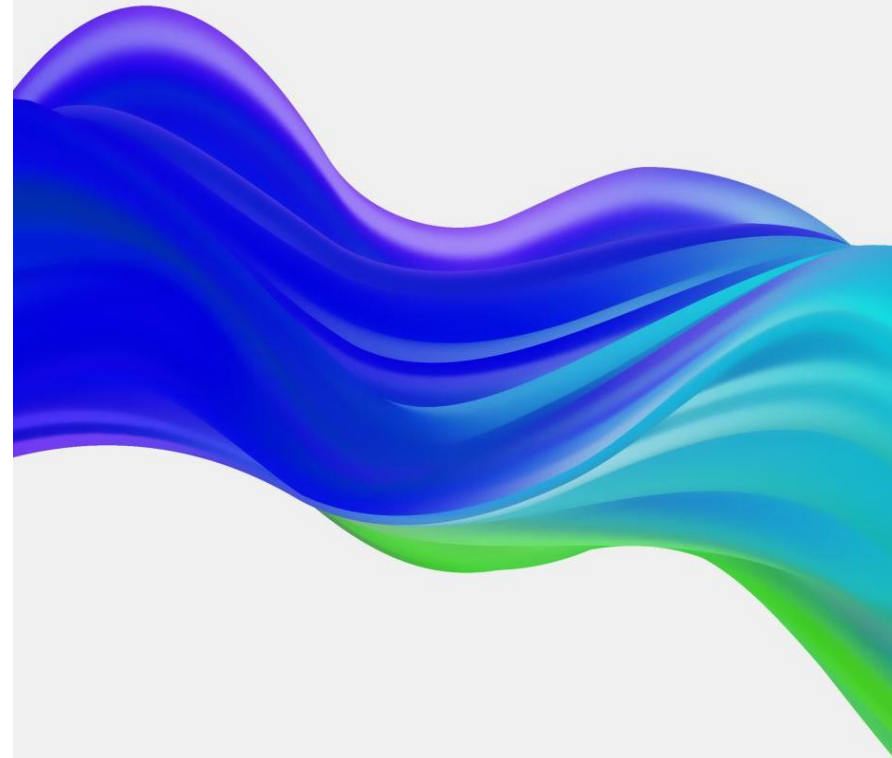


RECOMMENDATIONS FOR ARPA FUNDING PRIORITIES

Joint Meeting
Grand Isle Selectboard
& Planning Commission
October 18, 2022



GRAND ISLE
PLANNING COMMISSION
MEMBERS

Emily Clark, Chair

Shawn Mercy, Vice-Chair

Howard DeMars

Andy Paradee

Jennifer Morway

WHAT HAS THE PLANNING COMMISSION BEEN WORKING ON?



Understand ARPA funds approved uses and rules/restrictions, monitor reporting guidelines



Conduct ARPA Town Survey – February through April 2022



Participate in ARPA webinars/training, with additional guidance from VLCT & NRPC



Monitor how other towns are allocating ARPA money



Review inputs & submissions, discuss priorities

GRAND ISLE ARPA FUNDS INFO

\$638,000 – Project/use-of-funds must be committed by December 2024 & spent by December 2026

“Standard Allowance” – Funds can be used by Town for any government services or infrastructure (submitted April 2022)

ARPA Directive – Funds represent a “unique opportunity for state & local governments to make strategic investments in long-lived assets”

ARPA SURVEY BASICS

Survey Monkey survey was open 2/15/22 – 4/3/22

Links to survey were promoted on Grand Isle Town homepage, Planning Commission page, Front Porch Forum, ad in Islander

196 Responses, more than 90% year-round, 85% lived in Grand Isle more than 5 years (50% > 15 years), 108 people provided emails for follow-up engagement in the ARPA planning process

Q1 - PICK 5 PRIORITIES - SUMMARY

Almost 60% chose these priorities

- New Multi-purpose Town Center Building/s
- Improvements to Drinking Water Infrastructure

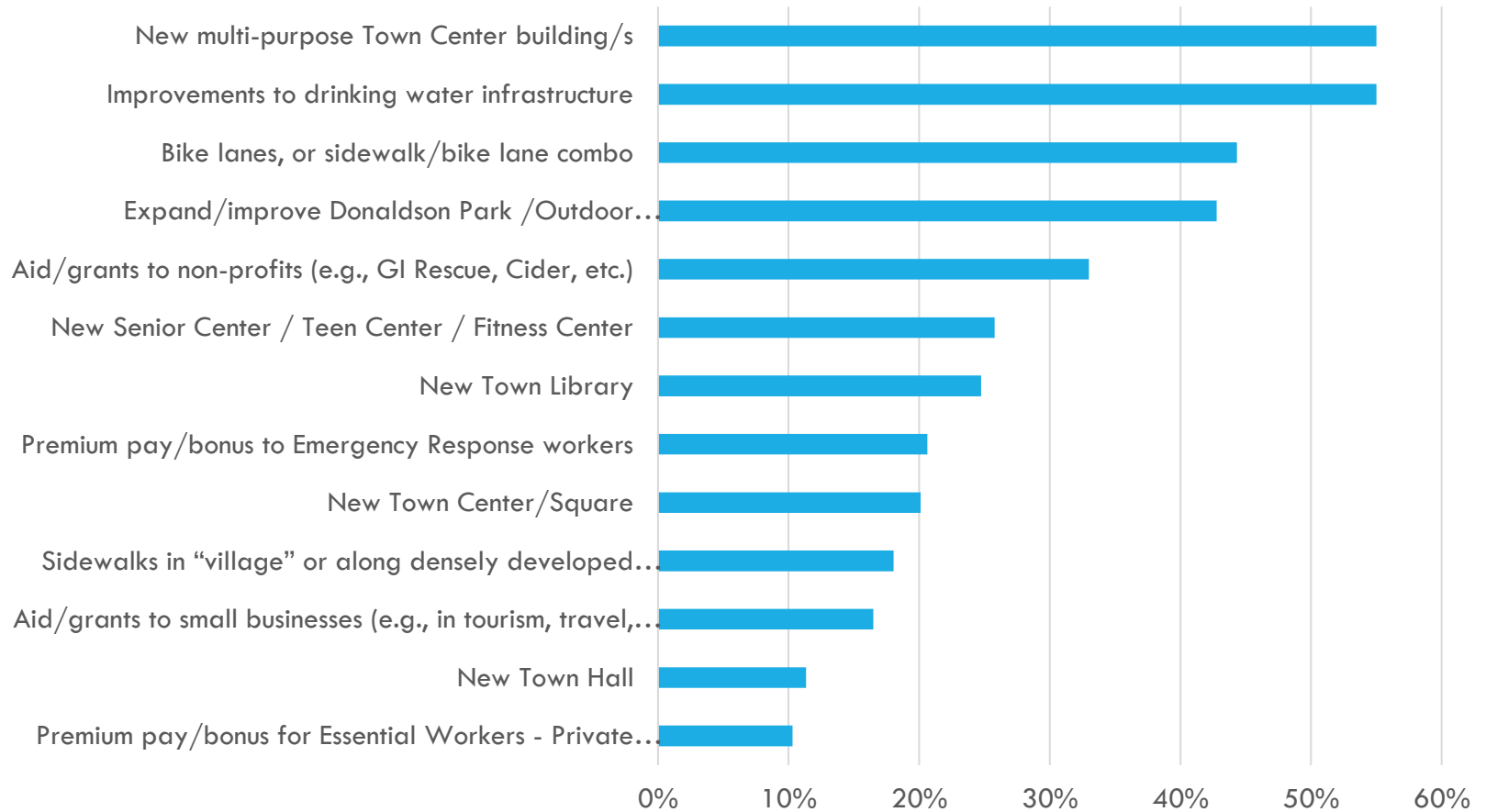
20% - 50% chose these

- Bike Lanes / Sidewalk — Bike Lane Combo
- Improvements to Donaldson Park / Outdoor Recreation Facilities
- Aid/Grants to Non-Profits e.g. Rescue, Cider, etc.
- New Senior Center / Teen Center / Fitness Center
- New Town Library
- Premium Pay/Bonus to Emergency Response Workers
- New Town Center/Square

Less than 20%...

- Sidewalks
- Grants to Small Businesses
- New Town Hall
- Essential Worker Pay (private sector)

Q1 - PICK 5 PRIORITIES - DATA



VLCT & NRPC ADVICE

LEVERAGE “OTHER PEOPLE’S MONEY”

At the advice of VLCT & Regional Planning Commissions, towns are moving carefully & seeking ways to use ARPA funds for grant and loan matches — to LEVERAGE “other people’s money”

[Chittenden County Regional Planning Commission](#) (CCRPC) compiled a comprehensive database of funding sources that are available to municipalities and local projects, [CCRPC Funding Database](#) (ccrptccvt.org/funding-opportunities)

Sample of the funding sources that may be relevant for potential Grand Isle projects include:

- VT Municipal Planning Grant & VT Community Development Planning Grant
- USDA-RD Community Facilities Direct Loan and Grant Program
- USDA-RD Community Facilities Technical Facilities and Training Grant
- VEDA Direct Loan Program
- VEDA Commercial Energy Loan Program
- VEDA Electric Vehicle Charging Station Loan Program

USDA-RD COMMUNITY FACILITIES DIRECT LOAN AND GRANT PROGRAM

This program provides affordable funding to develop essential community facilities in rural areas. An essential community facility is defined as a facility that provides an essential service to the local community for the orderly development of the community in a primarily rural area, and does not include private, commercial or business undertakings.

- **Funding Agency or Organization**
USDA-RD - US Department of Agriculture Rural Development
- **Local Match Requirement**
25% to 85% for grants
- **Award Amount**
Varies
- **Deadline**
National Pool - April
State Pool - December
- **Competitive?**
Competitive
- **Eligible Organizations**
Municipal
- **Project Categories**
Economic Development, Infrastructure and Housing

USDA-RD COMMUNITY FACILITIES TECHNICAL ASSISTANCE AND TRAINING GRANT

Provides associations Technical Assistance and/or training with respect to essential community facilities programs. The Technical Assistance and/or training will assist communities, Indian Tribes, and Nonprofit Corporations to identify and plan for community facility needs that exist in their area. Once those needs have been identified, the Grantee can assist in identifying public and private resources to finance those identified community facility needs. Rural areas including cities, villages, townships, towns and Federally recognized Tribal Lands outside the boundaries of a city of 20,000 or more.

- Funding Agency or Organization
USDA-RD - US Department of Agriculture Rural Development
- Local Match Requirement
None. At least 20% minimum to be competitive.
- Award Amount
Max - \$150,000
- Deadline
April
- Competitive?
Competitive
- Eligible Organizations
Municipal, Non-profit, RPC
- Project Categories
Economic Development, Infrastructure and Housing, Planning

VEDA DIRECT

LOAN

PROGRAM

This program helps borrowers to finance fixed assets. It is utilized in conjunction with bank financing. VEDA may either make its own direct loan or purchase a portion of a bank loan.

- Funding Agency or Organization
VEDA - Vermont Economic Development Authority
- Local Match Requirement
N/A, or depending on bank terms
- Award Amount
Varies
- Deadline
N/A
- Competitive?
Non-competitive
- Eligible Organizations
Business, Municipal
- Project Categories
Economic Development, Infrastructure and Housing

VEDA COMMERCIAL ENERGY LOAN PROGRAM

This program helps Vermont businesses finance qualifying renewable energy generation and energy efficiency improvement projects. Maximum loan size under this program is \$2.0 million (see Loan Rates, Terms and Fees section below). VEDA may either make its own direct loan or purchase a portion of another Financial Institution's loan.

- Funding Agency or Organization
VEDA - Vermont Economic Development Authority
- Local Match Requirement
10% to 40%
- Award Amount
Max - \$2,000,000
- Deadline
N/A
- Competitive?
Non-competitive
- Eligible Organizations
Business, Municipal, Non-profit, RPC
- Project Categories
Energy, Infrastructure and Housing

VEDA ELECTRIC VEHICLE CHARGING STATION LOAN PROGRAM

This program is funded through the State Infrastructure Bank (SIB), which is operated by the Vermont Economic Development Authority in conjunction with the Vermont Agency of Transportation and the Federal Highway Administration. Electric vehicle charging stations and natural gas refueling stations available for public use are eligible for SIB financing. For more information about electric vehicles and electric vehicle charging station technology, please visit www.driveelectricvt.com. Drive Electric Vermont is a project of the Vermont Energy Investment Corporation (VEIC) in partnership with the State of Vermont and a broad array of stakeholders advancing electric vehicle technology

- **Funding Agency or Organization**

VEDA - Vermont Economic Development Authority

- **Local Match Requirement**

N/A

- **Award Amount**

Max - \$100,000

- **Deadline**

Varies

- **Competitive?**

Non-competitive

- **Eligible Organizations**

Business, Municipal, Non-profit, RPC

- **Project Categories**

HOW IS ARPA FUNDING SUPPOSED TO BE USED?

Guidance from the American Rescue plans states:

“The funding provided under ARPA provides

a unique opportunity for state and local governments to make strategic investments in long-lived assets,

rebuild reserves to enhance financial stability, and cover temporary operating shortfalls until economic conditions and operations normalize.”

WHAT WAS
CONSIDERED BY THE
GI PLANNING
COMMISSION WHEN
MAKING THIS
RECOMMENDATION?

Project should impact as many Grand Isle citizens as possible

Money should be leveraged to make the largest impact (match for grants/loans)

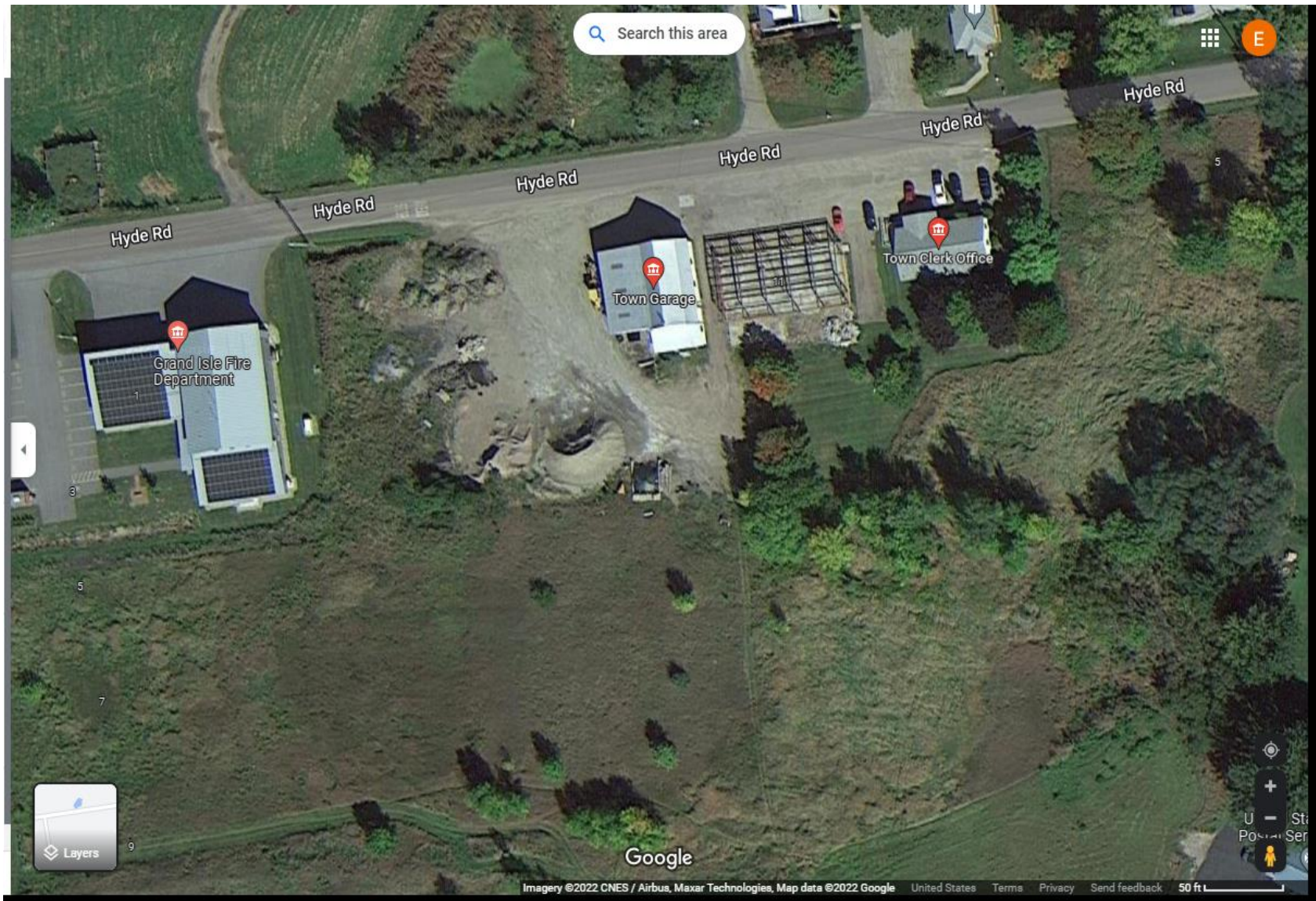
Does the proposed project have alternative grants, loans or alternative funding sources available?

Think big – ARPA funds represent a once in a lifetime opportunity for Grand Isle

PLANNING COMMISSION RECOMMENDS:

The Planning Commission recommends to the Selectboard that the town's ARPA monies be earmarked for building a town municipal center (to potentially include e.g., Library, Town Office, Community Space, Meeting Space, Senior/Teen/Recreation/Fitness Center), to have the greatest benefit to residents of Grand Isle, pending the upcoming Town planning process and Village Center Designation.

While the Planning Commission recognizes the financial needs of Grand Isle Fire, Rescue & Water Districts, we suggest that these needs are better addressed through the Town's annual budget processes.



Search this area



Hyde Rd

Hyde Rd

Hyde Rd

Hyde Rd

Hyde Rd

Hyde Rd

Grand Isle Fire Department

Town Garage

Town Clerk Office



Google



QUESTIONS & DISCUSSION



POTENTIAL NEXT STEPS

Selectboard to discuss earmarking ARPA funds for building a Municipal Town Center

Municipal Planning Grant – For revision of the Town Plan, integrated with Municipal Town Center planning (December 2022)

Form a Municipal Town Center Committee – Townspersons, and representative from SB, PC, Library Commission, Rec Commission, DRB, Town Office, etc.

VT Community Development Grant – To scope project, and to produce architectural and engineering plans, preliminary budgets, etc.